

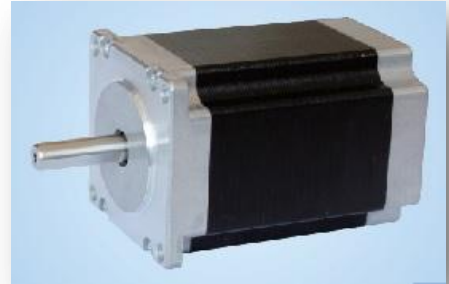
HIGH TORQUE HYBRID STEPPING MOTOR

1.8°

NEMA 24

60mm

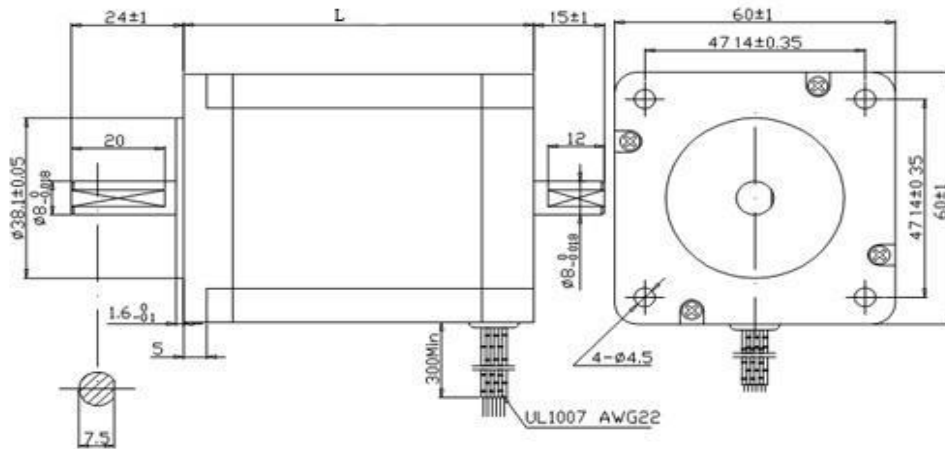
ITEM	SPECIFICATION
Step Angle	1.8°
Temperature Rise	80°CMax
Ambient Temperature	-20°C to +50°C
Insulation Resistance	100MΩ Min, 500VDC
Dielectric Strength	500VAC for 1 minute
Shaft Radial Play	0.06Max.(450 g-load)
Shaft Axial Play	0.08Max.(450 g-load)
Max Radial Force	75N(20mm from flange)
Max Axial Force	15N



TECHNICAL SPECIFICATION

Model No.		Rated Voltage	Current/Phase	Resistance/Phase	Inductance/Phase	Holding Torque	No: Of Leads	Detent Torque	Rotor Inertia	Weight	Length
		V	A	Ω	mH	Kg-cm		Kg-cm	g-cm2	Kg	mm
FT60SH47-1A	unipolar	3	2	1.5	2	7.8	8	0.5	275	0.6	47
	parallel	2.1	2.8	0.75	2	11					
	series	4.2	1.4	3	8	11					
FT60SH56-1A	unipolar	3.6	2	1.8	3.6	11.7	8	0.7	300	0.77	56
	parallel	2.52	2.8	0.9	3.6	16.5					
	series	5.04	1.4	3.6	14.4	16.5					
FT60SH67-1A	unipolar	4.8	2	2.4	4.6	15	8	0.9	570	1.2	67
	parallel	3.36	2.8	1.2	4.6	21					
	series	6.72	1.4	4.8	18.4	21					
FT60SH88-1A	unipolar	6	2	3	6.8	22	8	1	840	1.4	88
	parallel	4.17	2.8	1.5	6.8	31					
	series	8.4	1.4	6	27.2	31					
FT60SH100-1A	unipolar	8	2	4	9	28	8	1.1	1050	1.6	100
	parallel	5.6	2.8	2	9	39					
	series	11.2	1.4	8	36	39					

MOTOR DIMENSIONS



WIRING DIAGRAM

