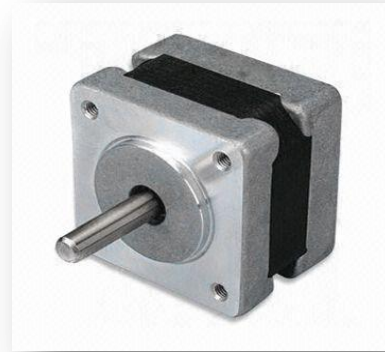


## HIGH TORQUE HYBRID STEPPING MOTOR

**1.8°      NEMA 16      39mm**

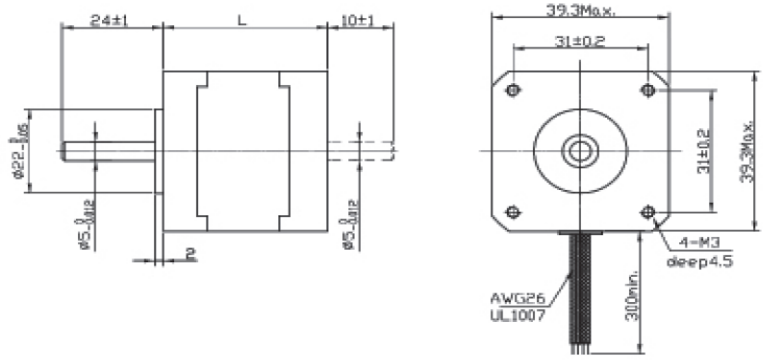
ITEM	SPECIFICATION
Step Angle	1.8°
Temperature Rise	80°CMax
Ambient Temperature	-20°C to +50°C
Insulation Resistance	100MΩ Min, 500VDC
Dielectric Strength	500VAC for 1 minute
Shaft Radial Play	0.06Max.(450 g-load)
Shaft Axial Play	0.08Max.(450 g-load)
Max Radial Force	28N(20mm from flange)
Max Axial Force	10N



### TECHNICAL SPECIFICATION

Model No.	Rated Voltage	Current/Phase	Resistance/Phase	Inductance/Phase	Holding Torque		No: Of Leads	Rotor Inertia	Weight	Length
	V	A	Ω	mH	Oz-in	g-cm				
FT39SH20-044A	2.64	0.4	6.6	7.5	9	650	4	11	0.12	20
FT39SH20-056A	6.5	0.5	13	7.5	11	800	6			
FT39SH34-064A	4.55	0.65	7	9.3	25	1800	4	20	0.18	34
FT39SH34-044A	12	0.4	30	32	29	2100	4			
FT39SH34-064A	9	0.6	15	16	31	2200	4			
FT39SH34-036A	12	0.3	40	21	18	1300	6			
FT39SH34-016A	12	0.16	75	50	15	1100	6			
FT39SH38-054A	12	0.5	24	45	40	2900	4	28	0.2	38
FT39SH38-086A	6	0.8	7.5	6	28	2000	6			
FT42SH44-034A	12	0.3	40	100	39	2800	4	36	0.25	44

**MOTOR DIMENSIONS**



**WIRING DIAGRAM**

