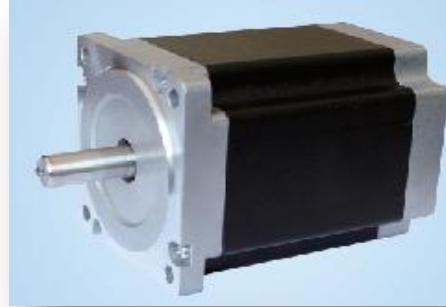


HIGH TORQUE HYBRID STEPPING MOTOR

1.8° NEMA 34 86mm

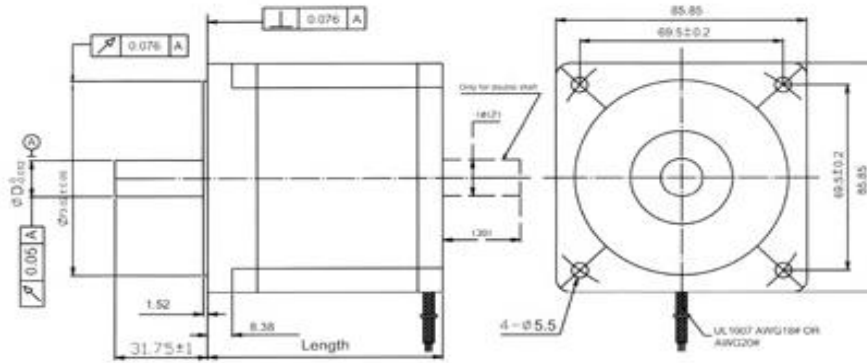
ITEM	SPECIFICATION
Step Angle	1.8°
Temperature Rise	80°CMax
Ambient Temperature	-20°C to +50°C
Insulation Resistance	100MΩ Min, 500VDC
Dielectric Strength	500VAC for 1 minute
Shaft Radial Play	0.06Max.(450 g-load)
Shaft Axial Play	0.08Max.(450 g-load)
Max Radial Force	220N(20mm from flange)
Max Axial Force	60N



TECHNICAL SPECIFICATION

Model No.	Current/ Phase	Resistance/ Phase	Inductance/ Phase	Holding Torque	No: Of Leads	Detent Torque	Rotor Inertia	Weight	Length
	A	Ω	mH	Kg-cm		Kg-cm	g-cm ²	Kg	mm
FT86SH65-594A	5.9	0.28	1.7	34	4	1.7	1000	0.8	65
FT86SH65-284A	2.8	1.4	3.9	34	8				
FT86SH80-554A	5.5	0.46	4	46	4	2.3	1400	1.2	80
FT86SH80-428A	4.24	0.75	3.4	46	8				
FT86SH118-604A	6	0.6	6.5	87	4	3.8	2700	2.4	118
FT86SH118-428A	4.2	0.9	6	87	8				
FT86SH156-624A	6.2	0.75	9	122	4	5.4	4000	3.6	156
FT86SH156-428A	4.2	1.25	8	122	8				

MOTOR DIMENSIONS



WIRING DIAGRAM

